

Installation path

1 - Choosing the default FSX Folder

Default path is C:\Program Files\Microsoft Games\Microsoft Flight Simulator X

but, in some cases, it may be different, in this example (Vista)
O:\Programs\Microsoft Games\Microsoft Flight Simulator X



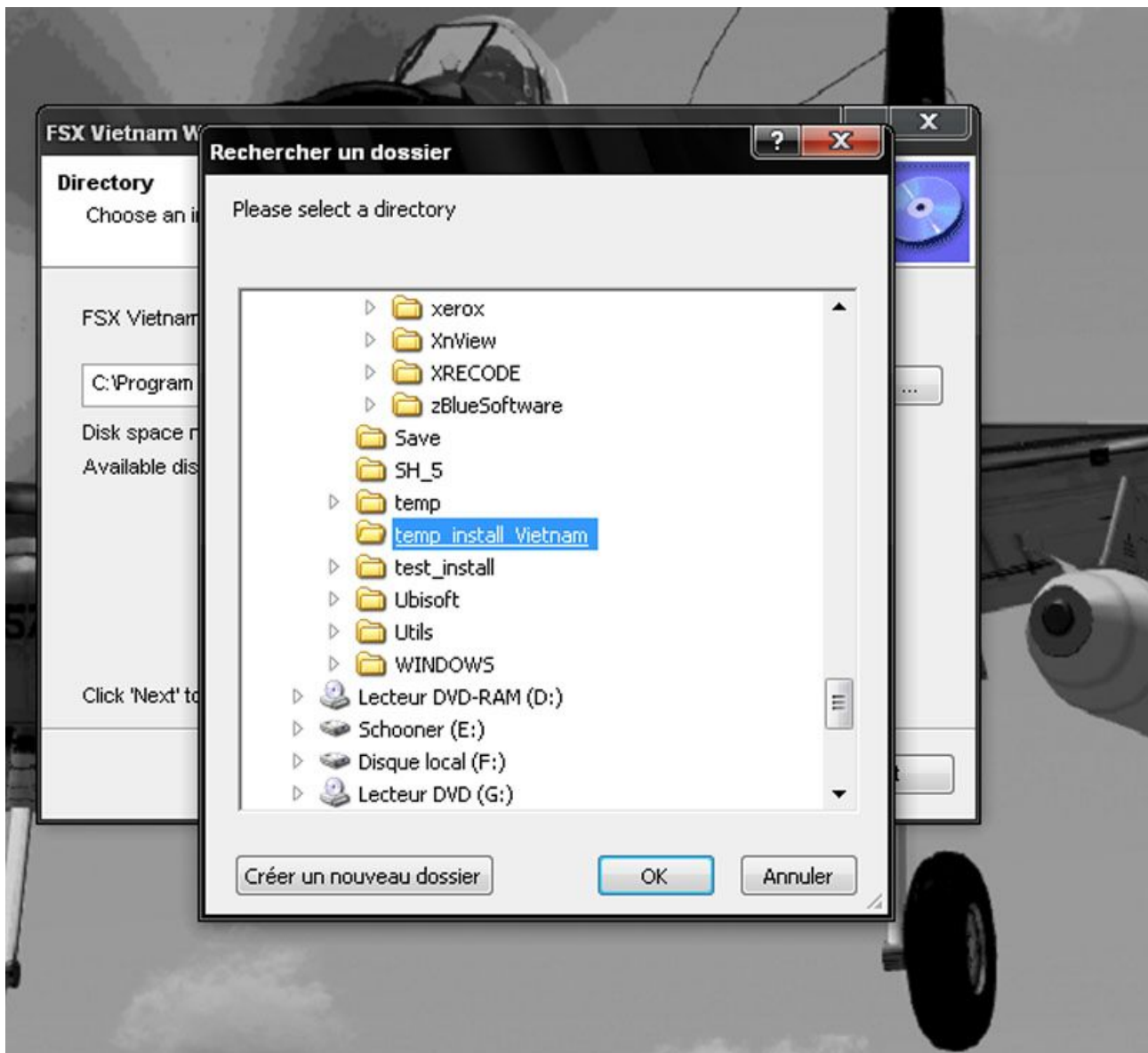
After selecting the correct path, click next.

2 – Choosing another folder

Create a new folder, it may be at O: root, such as
O:\temp_install_Vietnam.

Then launch FSX Vietnam War project.exe
At directory, by the browser, choose the folder you have create

O:\temp_install_Vietnam



And then click on next. Installation is launched in this temporary folder.

At end, go to this folder, there will be 3 folders

Addon Scenery : the sceneries

SimObjects: AI airplanes

VnW Documentation : the documentation, Flight plans and TAD

and a file : uninstal.exe

copy the 3 folders, and paste them in your FSX folder, confirm overwriting.

Or you can copy contents of each folders in

Addon Scenery\, SimObjects\Airplanes and VnW Documentation at FSX folder root